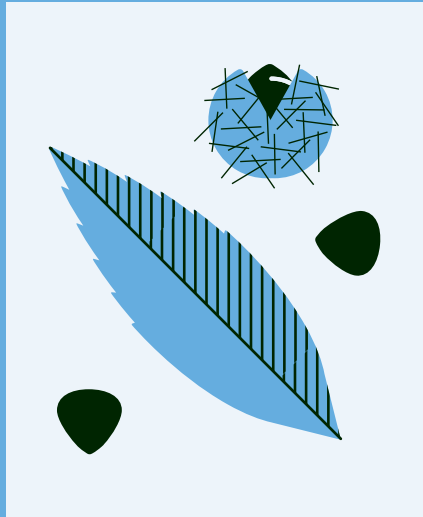


The colder months bring a lot of change to the woods. Trees turn golden, the ground becomes crunchy, and thoughts turn to collecting for the winter ahead.

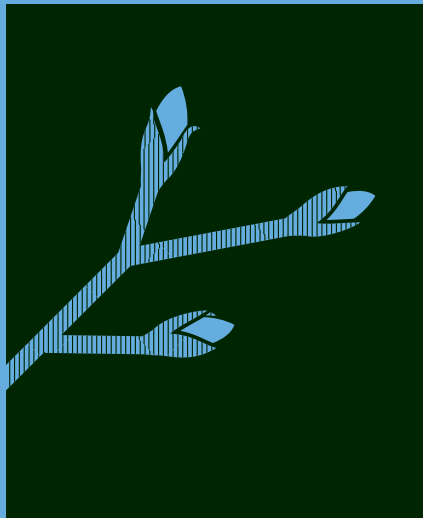
There’s still plenty to look out for and uncover between the fallen leaves. See if you can spot everything on this autumn tick list. And don’t forget to take a picture to share with other woodland explorers.

#ecclesallwoods



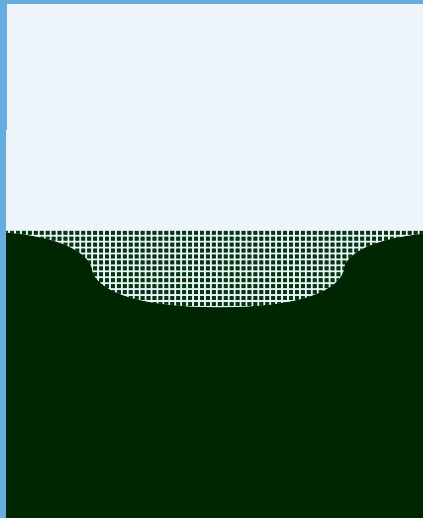
**Sweet chestnut**

The sweet chestnuts are some of the oldest, largest trees in the woods. Look out for their grooved trunks and large burrs. The leaves are large with zig-zag edges and the chestnuts fall to the ground in spikey cases. See if you can open a spikey case carefully, to find the chestnuts inside.



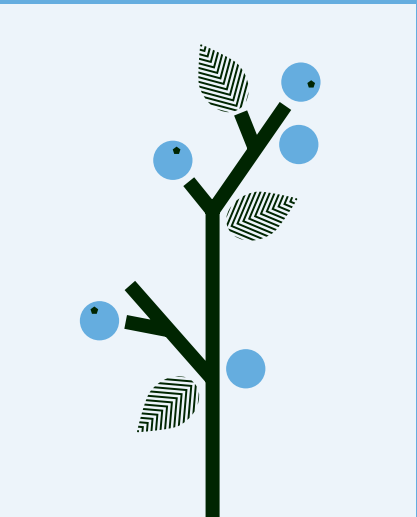
**Buds**

When deciduous trees lose their leaves in winter it is hard to identify them. However, if you look closely at the buds you can often work out what tree it is. Look out for the black buds of ash trees, the bright green buds of sycamore trees, and a cluster of buds at the end of the oak trees’ twigs.



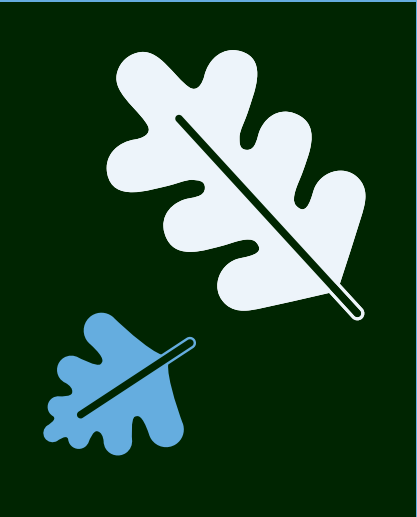
**Q-pits**

Winter is a great time to spot Q-pits. A Q-pit is a circular dip in the ground where white coal was produced before the industrial revolution. There is abundance of Q-pits and charcoal hearths in the woods. Can you see circular depressions that are roughly three metres across, with a gap where the chimney would have been (this capital Q shape gives them their name).



**Berries**

In September, berries appear on rowan, yew, elder and hawthorn trees. Bramble bushes are abundant with blackberries. In the winter, holly trees have bright red berries and ivy plants have purple berries. These berries are an important food source for many animals, especially birds.



**Fallen leaves**

Ecclesall Woods is home to over 15 species of tree. How many different types of leaf can you find? Try and collect them and create a line of colour on the ground, from green to yellow to orange to brown.



**Squirrels**

At this time of year squirrels are busy collecting nuts and seeds and burying them in hiding places around the woods, so that they can dig them up in winter when food is scarce. Can you find an acorn and bury it like a squirrel? If a squirrel doesn’t find it, it might grow into an oak tree!



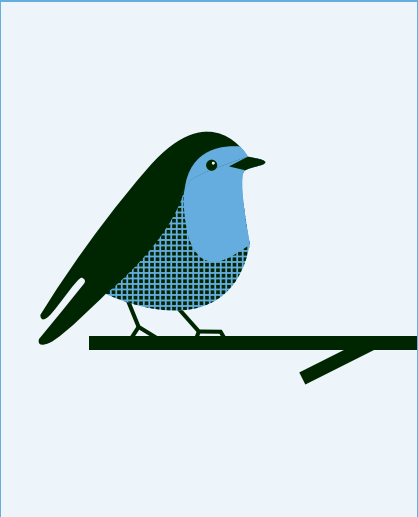
**Fungi**

Ecclesall Woods is rich in fungi. The purple coloured amethyst deceiver hides amongst the leaf litter. Bracket fungi cling to the dead standing wood and earth balls are often discovered right by the side of the paths. WARNING: some fungi are poisonous so always wash your hands after touching them.



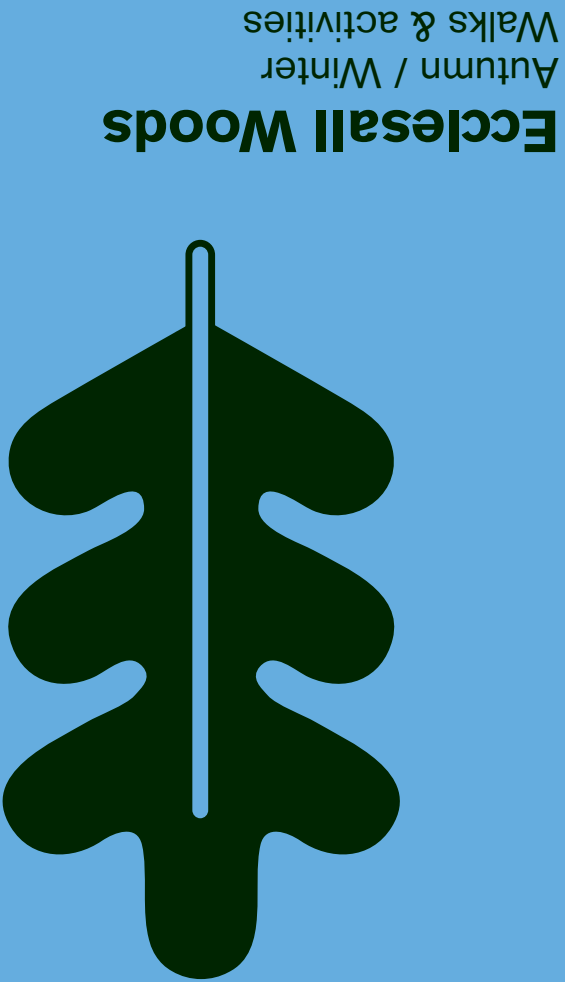
**Minibeasts**

Little creatures live all over the woodlands throughout winter. Creatures like woodlice, beetles, slugs, snails, earwigs, millipedes, and centipedes are active all year round. Roll a log over or move a few leaves and see what you find underneath. Please remember to replace the logs/leaves so the animals’ homes are not destroyed.



**Birds**

The woods are full of birds all year round. In autumn, look out for pairs of jays collecting acorns and nuthatches climbing up the trunks of trees. In winter, look out for robins sitting in the branches. If you spot a robin, stand still and wait for it to sing.



Ecclesall Woods  
Autumn / Winter  
Walks & activities

Ecclesall Woods is a wonderful place for a walk in all seasons. This leaflet includes three walks of different lengths, so you can choose one that suits you. It also includes activities and exciting things to look out for while exploring the woods.

Woodland Discovery Centre,  
Abbey Lane, Ecclesall Woods,  
Sheffield, S7 2QZ  
  
0114 235 6348  
woodland.discovery@sheffield.gov.uk  
@ecclesallwoods  
#ecclesallwoods

### Smell the woodland!

Imagine you are an animal in the woods this autumn and winter. Animals rely on their sense of smell to find food, find their way around, leave messages for other animals and to stay away from predators. Can you use your nose in the woodland today? What does it smell like?

- Smell the mud – get down low and see what the woodland floor smells like.
- Smell the bark of a tree – give a tree a cuddle and smell it!
- Smell different leaves – do all leaves smell the same?
- Smell nuts and seeds – what do acorns smell like?

# Ecclesall Woods

Ancient woodlands. Enormous sweet chestnut trees. Q-pits. A rustic coffee stop. Birdsong. Whichever path you take through Ecclesall Woods, you'll discover something delightful.

Use this map to help you find a route that suits you.

### 30-minute stroll (suitable for pushchairs):

● Leave the Woodland Discovery Centre through the gate to the left of the car park and turn left. ● Continue down the slope until you reach a wonky crossroads, take the second path and pass the fallen tree on your left. ● Continue on this path, past the beech tree covered in fungi on your left. ● At the crossroads continue straight on. ● When you cross a small, planked bridge, turn right. ● Continue to a crossroads with a beech tree and go straight on. ● At the next fork, take the right path. ● At the next junction take a sharp right, down the hill. ● Continue to the crossroads, turn left and walk back up to the Woodland Discovery Centre, through the gate on your right.

### 1-hour wander:

● Leave the Woodland Discovery Centre through the gate to the left of the car park and take the path to the right over the little bridge. ● Turn left and bear left downhill to a bridge. ● Walk up the steps, turn right and follow the bridleway. ● Take the left fork uphill at the next junction. ● Turn left when you reach a fork in the path and continue uphill. ● Follow the path as it rounds to the left and begins to go downhill. ● Continue past a small path on your right. ● At the next fork, bear right. ● Go straight on at the next crossroads, signed to Abbeydale Road South. ● At the next junction bear left. ● At the gate turn left. ● Walk all along the bottom path until you get to a crossroads, go over the small, planked bridge. ● Continue over a crossroads, past a path on your right, and at the next junction take the second exit leading uphill towards the Woodland Discovery Centre, through the gate on your right.

### 2-hour explore:

● Leave the Woodland Discovery Centre through the gate to the left of the car park and take the path to the right over the little bridge. ● Turn left and bear left downhill to a bridge. ● Walk up the steps, turn right and follow the bridleway. ● At the next junction turn right and go through the gate into the Donkey Field. ● At the next gate turn right and go down the steps. ● Turn right across the bridge, immediately left, and left again following the sign to Abbeydale Road South. ● At the corner with three gates turn left. ● Continue, cross the stream, and reach a gate. ● Turn left, cross a stream and turn immediately right, following the bridleway to Abbeydale Road South. ● Continue along this wiggly path past a double trunked oak tree on the left. ● At the next fork, bear right. ● Continue at the next crossroads to a gate. ● Abbeydale Road will be in front of you, turn left. ● Continue along this bottom path until you meet a major crossroads. Turn right and cross Abbey Lane. ● Enter the woods and follow the bridleway through wood 2 and cross Whirlowdale Road. ● In wood 1 follow the bridleway to the Dobcroft Road entrance. ● At the noticeboard crossroads go straight on, on the footpath signed to Abbey Lane. ● Climb towards the top corner of wood 1 and turn left on the footpath signed to Whirlowdale Road. ● Continue at the two crossroads to the road and cross over Abbey Lane. ● Re-enter wood 3 slightly to the right. ● Walk down the path and bear left to return to the Woodland Discovery Centre.

Enjoyed these walks? Look out for other leaflets in the Woodland Discovery Centre – try the archaeology trail or an audio trail through the woods.

For more information about the woods, events and workshops visit [www.sheffield.gov.uk/discoverycentre](http://www.sheffield.gov.uk/discoverycentre)

Don't forget to share what you discover using #ecclesallwoods

